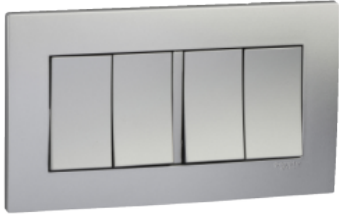


# Product datasheet

Specifications



## Vivace 16AX 250V 4gang 2Way Switch, Aluminium Silver

KB34\_AS

❗ Discontinued on: 30 June 2023

❗ Discontinued

### Main

Range	Vivace
Product or component type	Switch
Device short name	KB34
Device application	Control
Switch function	2-way

### Complementary

Device presentation	Complete mechanism
Actuator	Rocker
Number of gangs	4 gangs
Colour tint	Aluminium silver
Material	Polycarbonate: grid plate Polycarbonate: surround Nylon: base
Projecting depth	8 mm
Device mounting	Flush
Mounting support	Wall mounted
Fixing mode	By screw M3.5
Fixing center	120.6 mm
Embedding depth	35 mm
Rated current	16 AX at 250 V AC, fluorescent
[Ue] rated operational voltage	250 V AC
Network frequency	50 Hz
Contacts material	Brass and phosphor bronze
Connections - terminals	pillar terminal
Terminal identifier	COM L2 L1
Tightening torque	0.4 N.m
Clamping connection capacity	<= 2.5 mm <sup>2</sup>

Width	146 mm
Height	86 mm

## Environment

Standards	IEC 60669-1 MS IEC 60669-1 SS 227
Ambient air temperature for operation	-5...40 °C
Relative humidity	0...95 %
Environmental characteristic	Indoor use

## Packing Units

Unit Type of Package 1	PCE
Number of Units in Package 1	1
Package 1 Height	3.1 cm
Package 1 Width	8.6 cm
Package 1 Length	14.6 cm
Package 1 Weight	136 g
Unit Type of Package 2	BB1
Number of Units in Package 2	5
Package 2 Height	15 cm
Package 2 Width	19 cm
Package 2 Length	5 cm
Package 2 Weight	752 g
Unit Type of Package 3	CAR
Number of Units in Package 3	50
Package 3 Height	21 cm
Package 3 Width	31.5 cm
Package 3 Length	50 cm
Package 3 Weight	7130 g

## Offer Sustainability

REACH Regulation	<a href="#">REACH Declaration</a>
EU RoHS Directive	Compliant <a href="#">EU RoHS Declaration</a>
Mercury free	Yes
China RoHS Regulation	<a href="#">China RoHS declaration</a> Product out of China RoHS scope. Substance declaration for your information
RoHS exemption information	<a href="#">Yes</a>

## Recommended replacement(s)